

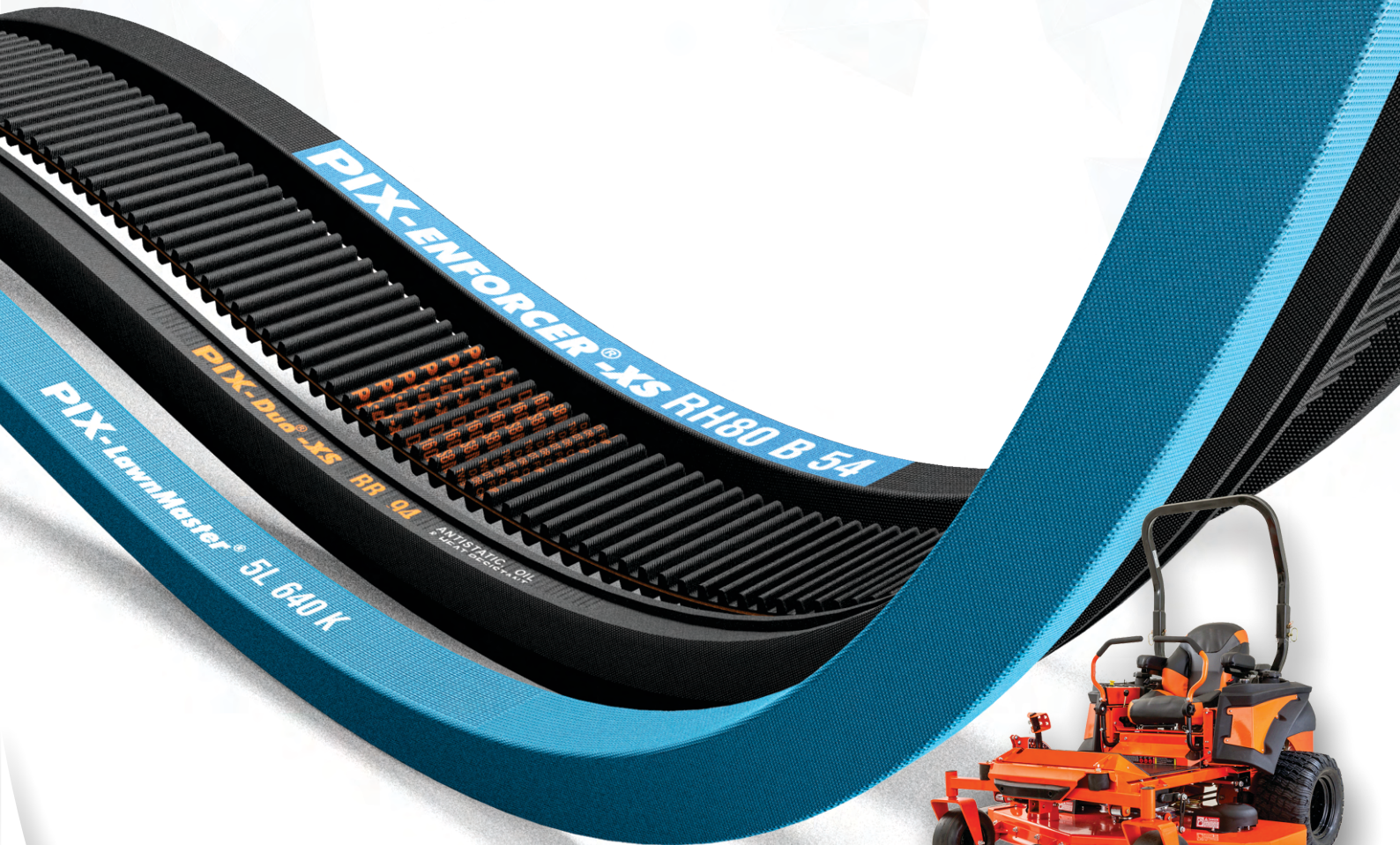


# PIX

Power Transmission Solutions

*Driving growth!*

## Lawn & Garden Belts



pixtrans



pixtransmission



pix-group



pixtrans



[www.pixtrans.com](http://www.pixtrans.com)

## PIX-Lawn & Garden Machinery Belts

PIX-Lawn & Garden Belts are specially engineered to endure the most demanding working conditions presented by grass machinery in uneven lawns and toughest of terrains.

### Special features

- › Best-of-class aramid cord Belts, designed for superior resistance to shock loads
- › Specially woven bare-back outer cover fabric for high wear resistance, enhanced flexibility and smooth clutching operation
- › Extensive range of special construction Belts designed to meet specific mower applications



PIX-Lawn & Garden Belts are expertly produced using technology and materials of the highest standard to provide exceptional reliability and performance in the most challenging drive conditions. They are characterised with physical properties such as high tensile strength, non-extensibility, high power transmission capacity, high wear-resistance and reverse bend flexibility.

## PIX-LawnMaster® Lawn Mower Wrap Belts



### Features

- › Aramid cords offer high tensile strength, high resistance to shock loads, and minimum elongation
- › Specially designed bare fabric facilitates smooth clutching operation and high resistance to wear and tear
- › Able to withstand high levels of reverse flexing
- › Resistance to oil, heat, and cracking
- › Temperature range: -18°C to +80°C

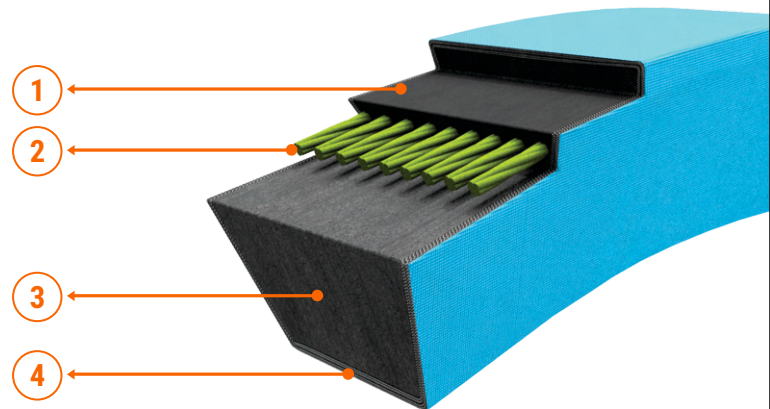


# PIX-LawnMaster®

## Lawn Mower Wrap Belts

### Constructional details

1. Specially insulated rubber compound offers superior adhesion
2. Specially treated aramid cords for high tensile strength
3. Fibre-loaded compression rubber base compound for enhanced power transmission
4. Special bare-back fabric outer-cover for the smooth clutching operation



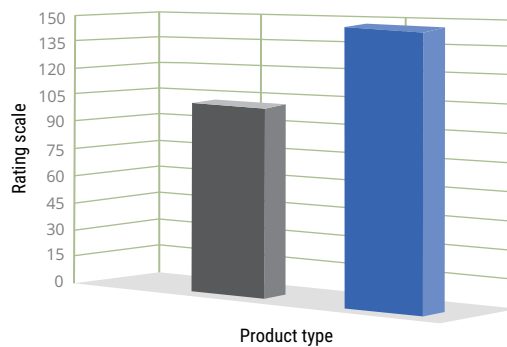
### Product range

Section	Top width (mm)	Thickness (mm)	Angle (Degree)	Mfg. Range		Length Designation
				Min.	Max.	
DCBU-3L	9.7	5.6	40	17.5"	173.5"	La
DCBU-4L	12.7	7.9	40	18"	359"	La
DCBU-5L	16.7	9.7	40	21"	179"	La

### Test Results

Life index

■ Standard Belt  
■ PIX-LawnMaster®



# PIX-Enforcer® -XS

High-power, High-strength, Inversely Flexible Wrap Belts

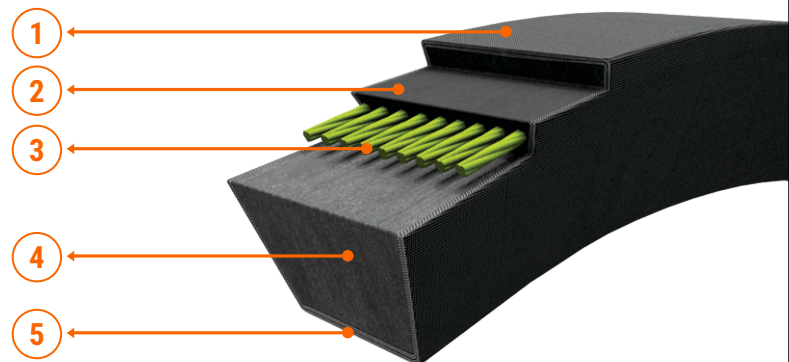


## Features

- Superior power transmission capacity over standard Belts
- Specially treated outer fabric cover for high wear resistance
- Specially coated aramid cords for enhanced adhesive strength and minimum elongation
- Unique design in wrap construction to facilitate smooth operation over smaller diameter pulleys with an acute reverse bend
- High performance under variable load conditions and the drives with reverse idlers
- Longer service life
- Extended temperature range: -25°C to + 100°C

## Constructional details

1. Special top fabric layer
2. Cushion rubber
3. Especially treated aramid tensile member for superior strength and low stretch
4. High modulus rubber base compound
5. Multi-layer fabric provides extra strength, also act as a crack barrier over applications where reverse bending is involved



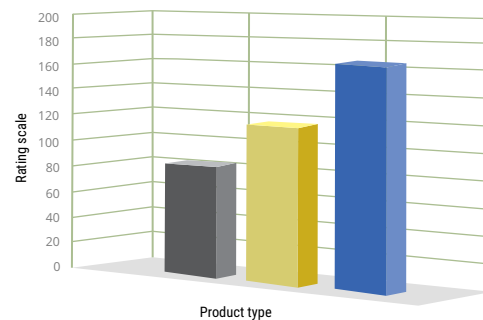
## Product range

Section	Top width (mm)	Thickness (mm)	Mfg. Range		Length Designation
			Min.	Max.	
RH80-A	13	8	46"	185"	Lp
RH80-B	17	10	46"	156"	Lp
RH80-C	22	11	46"	196"	Lp

## Test Results

Life index

- ▀ Standard Belt
- ▀ Competitor's equivalent
- ▀ PIX-Enforcer®



# PIX-Duo® -XS

Twin-power, Hexagonal Wrap Belts

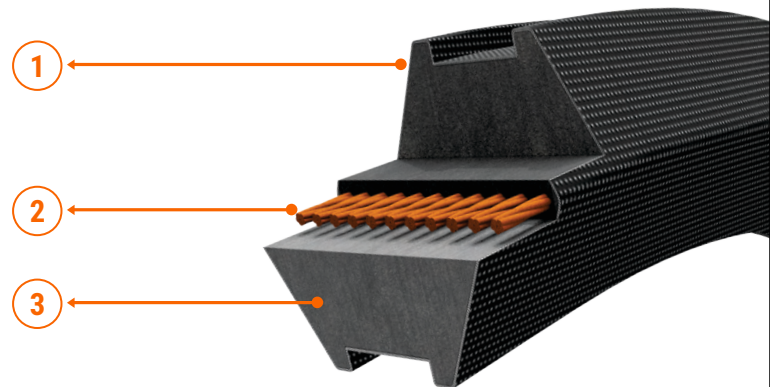


## Features

- › Enhanced product life
- › Transmits power from both sides of the Belt
- › Centrally positioned cords provide excellent power transmission at low-stretch
- › Unique design provides excellent flexibility for serpentine drives
- › Temperature range: -18°C to +80°C

## Constructional details

1. Wear-resistant bias-cut neoprene rubberised polyester cotton fabric
2. High tenacity, low stretch tension member
3. High modulus compression rubber



## Product range

Section	Top width (mm)	Thickness (mm)	Angle (Degree)	Mfg. Range		Length Designation
				Min.	Max.	
AA	13	10	40	46"	254"	Le
BB	17	14	40	40"	924"	Le
CC	22	17	40	73"	924"	Le
25	25	22	40	88"	925"	Le
DD	32	25	40	158"	900"	Le



# PIX-X'tra<sup>®</sup> -XP/XL/ML

## Raw-Edge-Laminated Belts

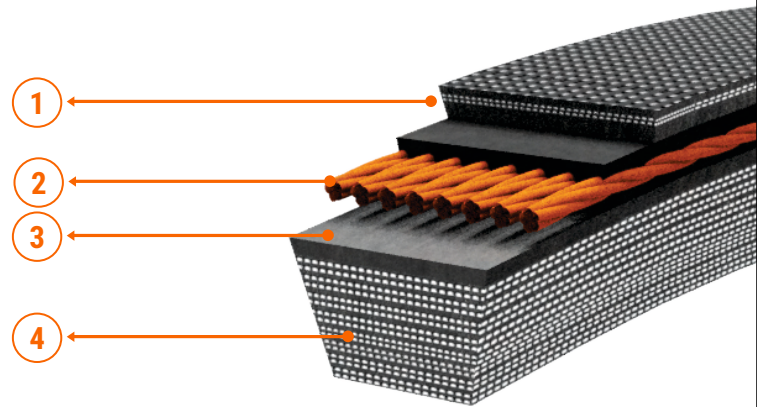


### Features

- High power transmission capacity than standard Belts
- Superior transverse stiffness and high wear-resistant
- Multi-layered bottom fabric, to restrict the formation of cracks and supports application involving acute reverse bend
- Anti-static, oil and heat resistant
- Suitable for application with back idlers
- Temperature range: -25°C to +100°C

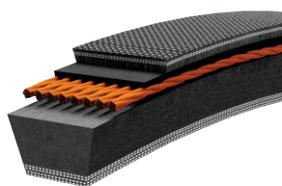
### Constructional details

1. Special top fabric layer
2. Specially treated and stabilised polyester cords
3. Fibre-filled base compound
4. Multi-layer fabric provides extra strength and act as a crack barrier in reverse bend conditions



### Product range

Section	Top width (mm)	Thickness (mm)	Angle (Degree)	Mfg. Range		Length Designation
				Min.	Max.	
AX	13.0	8.0	36	21.5"	200"	Li
BX	17.0	11.0	36	21.5"	200"	Li
3LX	9.7	5.6	36	21.5"	200"	La
4LX	12.7	7.9	36	21.5"	200"	La
5LX	16.7	9.7	36	21.5"	200"	La



**XP Section**



**XL Section**



**ML Section**



# PIX-Spectra® -XR

## Centre-corded, Extremely Flexible, Raw Edge Laminated Belts

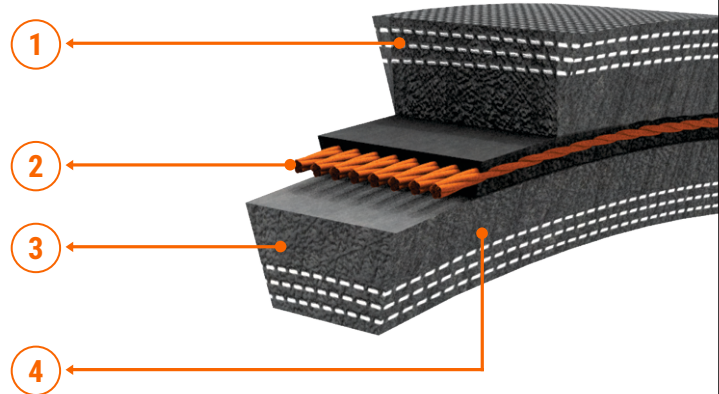


### Features

- High power rating compared to standard Wrap Belts
- High tensile strength
- Improved flexibility, suitable for back idler applications
- Longer service life
- Temperature range: -25°C to +100°C

### Constructional details

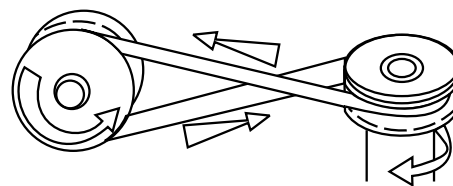
1. Multi-layer fabric provides extra strength and acts as a crack barrier under reverse bend conditions
2. High modulus polyester cords placed at the center to neutralise the reverse bending stress
3. Specially compounded rubber for better grip over smaller diameter pulleys
4. Unique design offers laminated side-walls, which supports high power transmission and accelerates the heat dissipation rate



### Product range

Section	Top width (mm)	Thickness (mm)	Mfg. Range	
			Min.	Max.
CC-AX	12.7	8.5	24"	200"
CC-BX	15.5	11.0	24"	200"
CC-CX	22.0	14.0	51"	200"

Reference standard: BS 3790

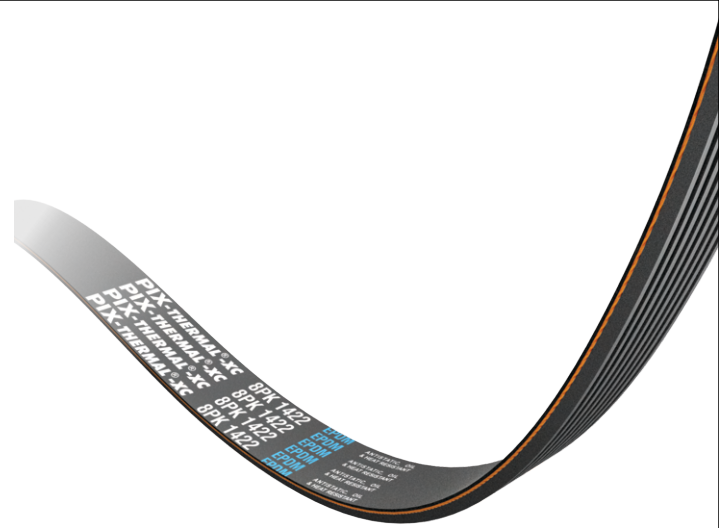


Twisted drive



# PIX-Thermal<sup>®</sup> -XC

## High-temperature, Poly-V Belts

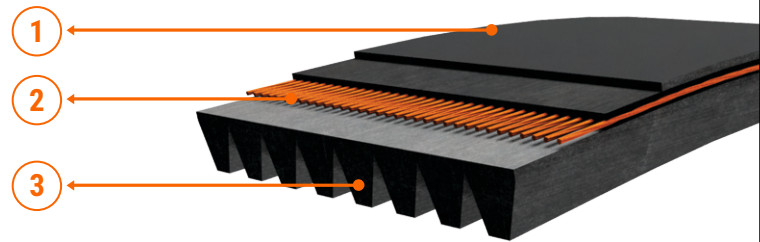


### Features

- High power transmission capacity
- Suitable for small diameter pulleys
- Maximum Belt linear speed up to 60 m/sec
- Extended service life
- High temperature resistant from -35°C to +130°C

### Constructional details

1. Specially designed top fabric for enhanced lateral stiffness and flexibility, protects the Belt from oil, grease and dust
2. EPDM Polyester tension member for minimal elongation, facilitating maintenance-free drive
3. Fibre-loaded EPDM compression rubber offers high thermal resistance and enhanced dimensional stability

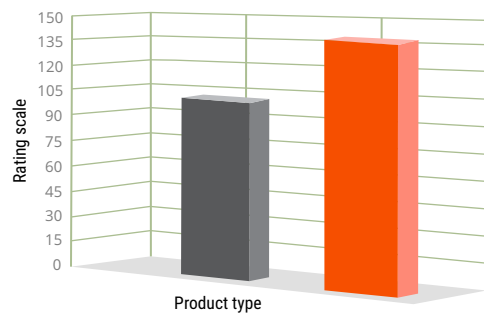


### Product range

Section	Thickness (mm)	Rib Pitch (mm)	Min. pulley Diameter (mm)	No. of Possible Ribs	Mfg. Range		Length Designation
					Min.	Max.	
HT-PJ	3.8	2.34	20	2 to 235	280 mm	5000 mm	Le
HT-PK	4.5	3.56	45	2 to 150	280 mm	5000 mm	Le
HT-PL	7.6	4.70	75	2 to 110	500 mm	5000 mm	Le

### Test Results

Thermal resistance



 Standard Poly-V Belt  
 PIX-Thermal<sup>®</sup>





# PIX-PolyStretch® -XC

## Elasticated, Poly-V Belts

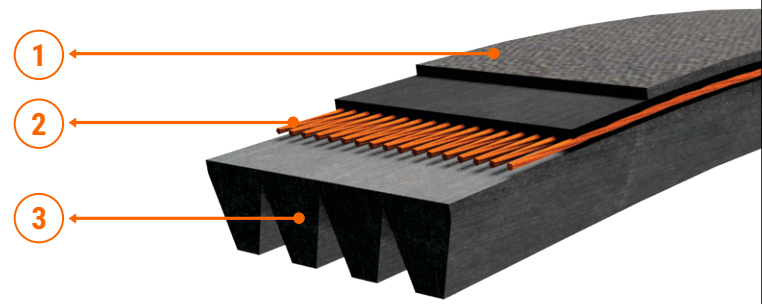
### Features

- Low noise levels
- Self-tensioning property maintains the Belt tension throughout its life
- Enhanced power transmission because of optimum contact area
- Easy installation
- Increased service life
- Moulded Belts offer superior dimensional stability
- Temperature range: -25° to +100°C



### Constructional details

1. Top special rubber design for enhanced lateral stiffness and flexibility, also protects the Belt from external agents such as oil, grease, dust, etc.
2. Specially designed Polyamide tension member for ease of installation and maintaining uniform tension throughout the Belt
3. High abrasion and thermal resistance rubber compound, supports retaining the Belt profile over longer period



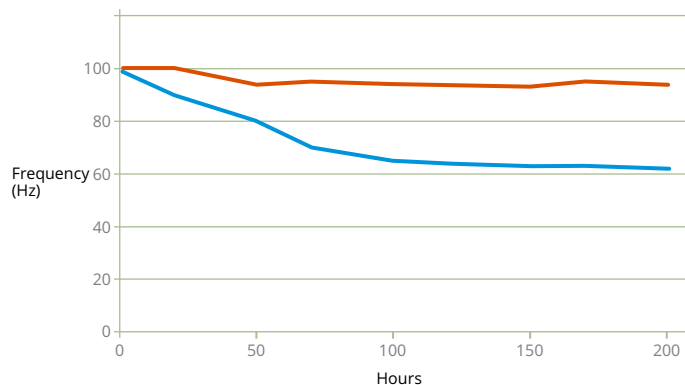
### Product range

Section	Thickness (mm)	Rib Pitch (mm)	No. of Possible Ribs	Mfg. Range		Length Designation
				Min.	Max.	
M-PS-PJ (Moulded)	3.3	2.34	2 to 210	300 mm	2500 mm	Le
M-PS-PH (Moulded)	2.9	1.60	2 to 305	300 mm	2500 mm	Le

### Test Results

Tension decay

- Standard Poly-V Belt
- PIX-PolyStretch®



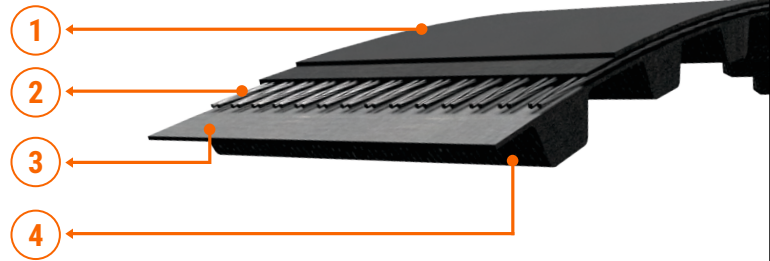
## PIX-X'act<sup>®</sup> Timing / Synchronous Belts

### Features

- High efficiency due to positive engagement between the Belt teeth and pulley grooves
- Fibre-glass cords provide excellent strength, flex life and high resistance to elongation
- Exact power transmission
- Low noise levels and longer service life
- Improved stress distribution
- Temperature range: -25°C to +100°C

### Constructional details

1. Polychloroprene backing
2. Fibre-glass cords for superior tensile strength and minimum elongation
3. High modulus fibre-loaded Polychloroprene rubber compound
4. Nylon stretchable fabric teeth offers high wear resistance



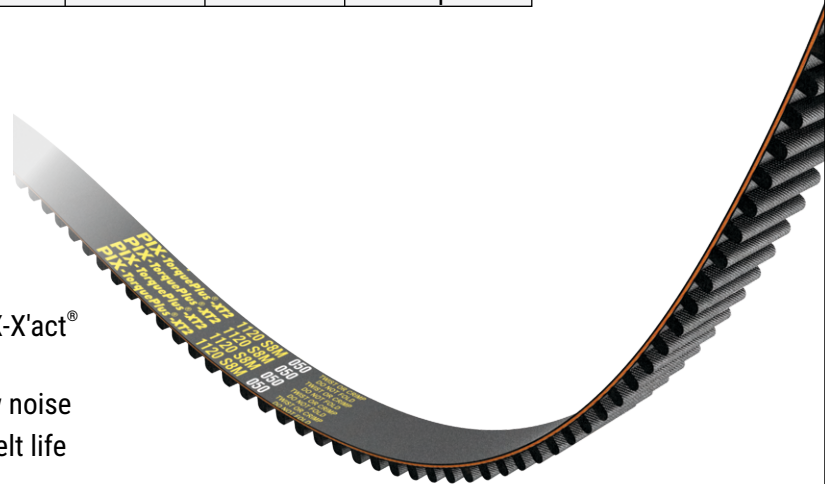
### Product range

Section	Pitch (mm)	Tooth Height (mm)	Thickness (mm)	Mfg. Range		Length Designation
				Min.	Max.	
XL	5.080	1.27	2.30	4.4"	212.8"	Lp
L	9.525	1.91	3.60	6.7"	270"	Lp
H	12.700	2.29	4.30	14.5"	272"	Lp
PXL	4.760	1.25	2.30	12.5"	50"	Lp

## PIX-TorquePlus<sup>®</sup>-XT2 High-power, Timing Belts

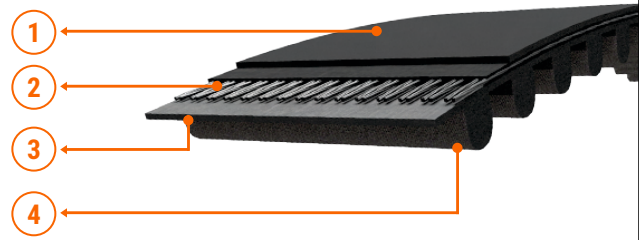
### Features

- 50% to 70% enhancement in power-rating over PIX-X'act<sup>®</sup> HTD/STD Belts
- Higher angular speed, resistance to loads and low noise
- Optimum operational efficiency and augmented Belt life
- Lower operational cost
- Anti-static properties as per ISO 9563
- Oil and heat resistance
- Temperature range: -25°C to +100°C



### Constructional details

1. Specially designed flexible neoprene compound offers high resistance to fatigue and adverse environmental conditions
2. Fibre glass cords for enhanced stability against dynamic load conditions, high resistance to elongation, offers excellent flex life and high tensile strength
3. High modulus teeth rubber for superior power transmission and high resistance to oil and heat
4. Specially woven fabric, resistant to heat and abrasion, protects the teeth from external damage



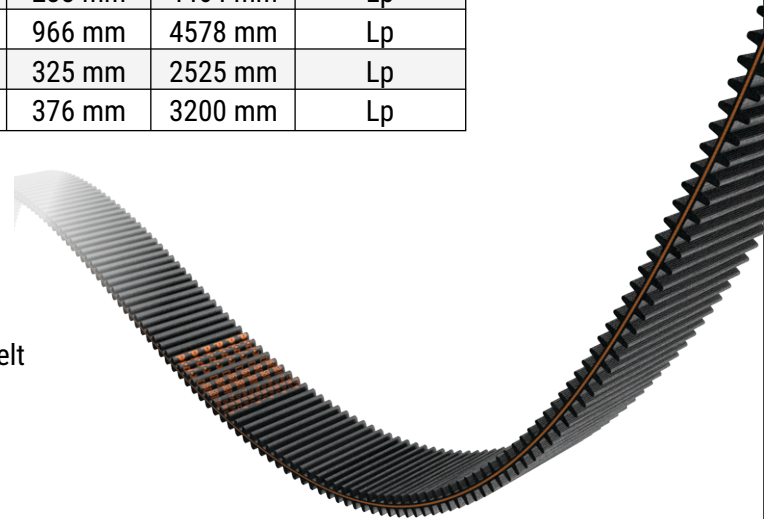
### Product range

Section	Pitch (mm)	Tooth Height (mm)	Thickness (mm)	Mfg. Range		Length Designation
				Min.	Max.	
TP2-5M	5.0	2.06	3.8	255 mm	2250 mm	Lp
TP2-8M	8.0	3.48	6.0	288 mm	4464 mm	Lp
TP2-14M	14.0	6.02	10.0	966 mm	4578 mm	Lp
TP2-S5M	5.0	1.91	3.4	325 mm	2525 mm	Lp
TP2-S8M	8.0	3.05	5.30	376 mm	3200 mm	Lp

### PIX-Duo<sup>®</sup>-XT Double-sided, Timing Belts

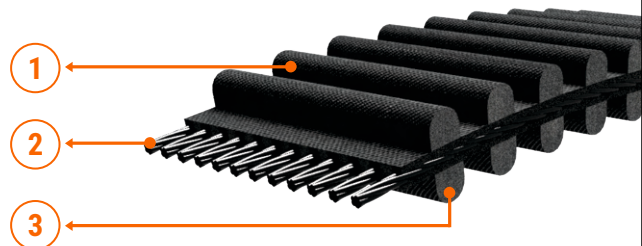
#### Features

- Facilitates power transmission from both sides of the Belt
- Highly flexible
- Extended stability, durability, strength and life
- Temperature range: -25°C to +100°C



### Constructional details

1. High wear-resistant nylon stretchable fabric provides strength to teeth profile
2. Centrally positioned, specially treated glass cords for high strength and negligible elongation
3. Fibre-loaded compression rubber for dimensional stability, to minimize the noise



### Product range

Section	Pitch (mm)	Tooth Height (mm)	Belt Thickness (mm)	Mfg. Range		Length Designation
				Min.	Max.	
DA-5M	5.00	2.06	5.26	400 mm	2050 mm	Lp
DA-S5M	5.00	1.91	5.00	410 mm	1420 mm	Lp
DA-8M	8.00	3.48	8.17	512 mm	4400 mm	Lp
DA-S8M	8.00	3.05	7.50	512 mm	6640 mm	Lp



# PIX at a Glance..

- Fastest emerging global player in the mechanical power transmission products
- Over five decades of expertise of manufacturing quality products
- Strong global brand identity
- Distribution network in over 100 countries
- Global product approvals, quality management systems
- Global presence, subsidiary operations in U.K., Germany and UAE
- State-of-art infrastructure for the development, manufacturing and testing of products
- Dedicated and committed R&D team

IATF 16949:2016	ISO 45001:2018	ISO 9001:2015	ISO 14001:2015
--------------------	-------------------	------------------	-------------------

## Corporate Office



### PIX Transmissions Ltd.

B-1208, 12th Floor, One BKC,  
Bandra-Kurla, Complex Bandra (East),  
Mumbai - 400051  
Maharashtra, India

- ☎ +91-(0)-22-61383000
- ☎ +91-(0)-22-61383025
- ✉ info@pixtrans.com
- 🌐 www.pixtrans.com

## Registered Office



### PIX Transmissions Ltd.

J-7, M.I.D.C. Hingna Road,  
Nagpur - 440016  
Maharashtra, India

- ☎ +91-(0)-7104 669 000
- ☎ +91-(0)-7104 669 007/8
- ✉ info@pixtrans.com
- 🌐 www.pixtrans.com

## Overseas Offices



### PIX Germany GmbH

Karl-Schurz-Str. 35  
33100 Paderborn, Germany

- ☎ +49 (0) 5251-2844 070
- ☎ +49 (0) 5251-2844 099
- ✉ info@pixgermany.com
- 🌐 www.pixgermany.de



### PIX Transmissions (Europe) Ltd.

12, Sterling Complex, Farthing  
Road, Ipswich, Suffolk IP1 5AP  
United Kingdom

- ☎ +44 (0) 1473-743 511
- ☎ +44 (0) 1473-742 227
- ✉ info@pixtranseu.com
- 🌐 www.pixtranseu.com



### PIX Middle East FZC

P. O. Box: 54526,  
Technology Park 16/1,  
R.A.K. Free Trade Zone,  
Ras-Al-Khaimah, UAE

- ☎ +971-7-2444366
- ☎ +971-7-2444367
- ✉ info@pixme.ae
- 🌐 www.pixme.ae



### PIX Middle East Trading LLC

P. O. Box: 238085  
Near UAE Exchange  
Al Quasis Ind-2  
Dubai, U.A.E.

- ☎ +971-4-2345 100
- ☎ +971-4-2345 101
- ✉ info@pixme.ae
- 🌐 www.pixme.ae